

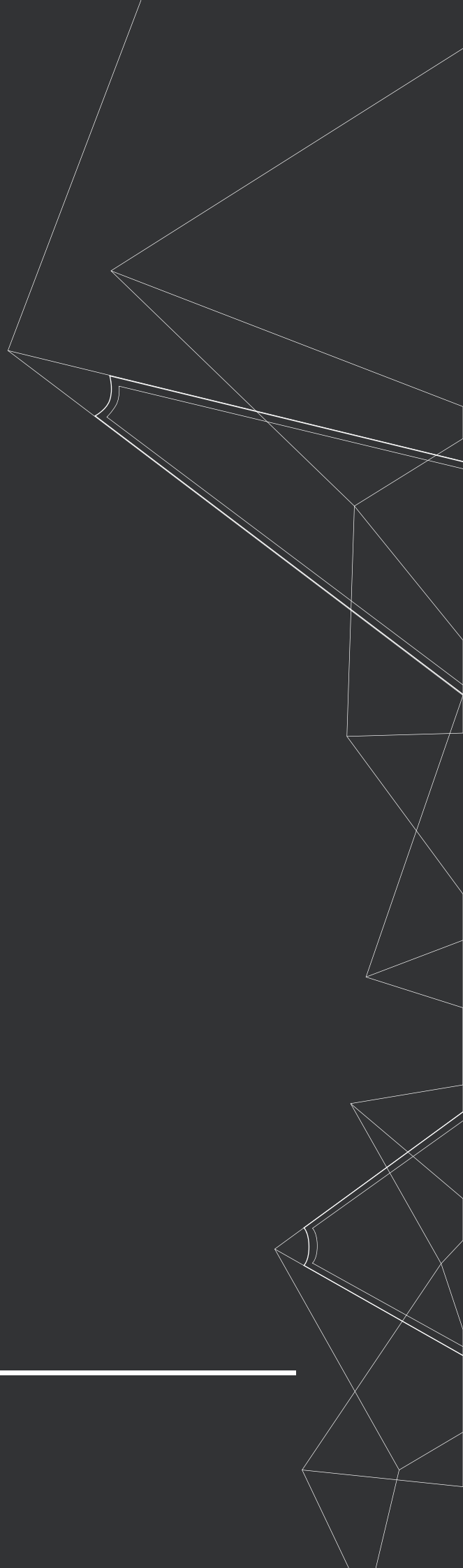
Xit

Interior Design | Fitout



COMPANY PROFILE

Xit Interior Design | Fitout



Greetings! We are honored to have you visit our company profile, and we hope you enjoy it. If you have any questions or suggestions, please don't hesitate to contact us.

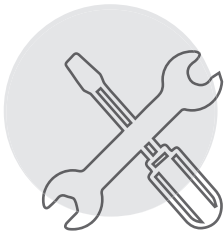
**YOUR IMAGE
TO REALITY**

Why Choose Us



Creative Design

Our professional creative designers have years of experience creating spaces that are stylish and functional. They use different textures, colors, and patterns to create a space that is both cozy and inviting. They also focus on creating a cohesive design.



Fast Execution

We offer fast, efficient interior design services that will fit any budget. We're dedicated to providing top-quality work and our team is experienced in a wide range of design styles. We'll get the job done quickly and efficiently.



Great Guarantee

We are confident that you will receive high-quality workmanship and creative designs that match your expectations. We work closely with our clients to make sure they are satisfied with the final product.

Our Services

- Designing your image
- Construction, Fitout
- Consulting Services
- Pre Construction Planning
- Renovations
- Maintenance

CONTENTS

1	BACKGROUND & DEVELOPMENT	4
●	About Us	4
●	Our Mission	4
●	Our Vision	4
2	INTERIOR DESIGN & FITOUT PROCESS	5
3	PROJECTS	6
●	Beverly Lounge	6
●	ABT Technologies Offices	8
●	The Lounge Restaurant	10
●	Gulf Oil Services Office	12
●	Cottonil Store	14
●	Cottonil Mall Store	16
●	Eccesswary Stores	18
●	Tamkeen Office	20
4	MANAGEMENT DIRECTORY	22
6	CLIENTS & SUPPLIERS	24
7	CONTACT INFO	26



Interior Design | Fitout

BACKGROUND & DEVELOPMENT

ABOUT US

Xit is a company that specializes in providing solutions for commercial and residential projects. We can take care of everything from designing the project to executing it, leaving you free to focus on what you do best.

Xit is an acronym for "exit." It's the shortcut for completing your one stop solution to all you need to complete your project from start to finish.

OUR MISSION

We aspire to create beautiful, innovative designs that will inspire our clients and touch their lives. We strive to be challenging and innovative, and to work together as a team in order to create amazing things. We also enjoy having fun, and hope to bring that joy to our work as well.

OUR VISION

We're investing in research and thought leadership to deliver data-driven insights and strategies to help our clients navigate a changing world. This includes exploring the future of the workplace, as well as the evolution of cities. We're also committed to delivering these insights and strategies in a way that's helpful and accessible to our clients.



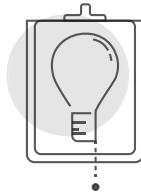
Interior Design | Fitout

Customer Engagement



Customer engagement is essential to ensuring that customers have a positive experience with our company.

Feasibility Study



We conduct a site visit to find out about your design, timescales and budget.



Design Review & Approval



Together we refine the internal layouts and specify key finishes and materials e.g., floors, carpets, furniture etc.. Final sign off on the design is required at this stage.

Design Concept



We develop 2D, 3D and fly through architectural layouts with attention to detail and design styles



Quotation & Work schedule



We provide pricing & work schedules to fit your budget and timeline.

Fit Out



we work on equipping a space with the necessary furniture, fixtures, and equipment to make it function as desired.



INTERIOR DESIGN & FITOUT PROCESS

Review



Final site visit to inspect the works and ensure total project completion.

BEVERLY LOUNGE, 126sqm

📍 AlHafa Market, Salalah, Oman.



Our customer's word

It was agreed with xit company to design and implement the Beverly Restaurant in Salalah, and the dealings were very professional in terms of ideas, design and implementation. The timing was according to what was agreed upon, and there was no doubt about it. This will not be the only deal with them, and I hope they have great success.



Our design concept

Beverly's story can be summarized in one word: Passion. This story of passion started when the owners got together and decided to challenge themselves and embark on a new adventure in the world of restaurants. The brand had to be based on a global and elegant style with a developed local touch in a privileged location on the waterfront in one of the most important cities and tourist destinations in Oman, which is the city of Salalah. The idea of Beverly is more than just a restaurant that serves delicious food, it is a destination for friends and family to gather. It suits all times through the availability of breakfast, lunch, and dinner. Beverly Lounge was inspired by Beverly City. The lounge provides a variety of international cuisine. We were inspired by the abundance of palm trees found around the location.

Challenges

Since we work in a very short time, less than a month and a half, we had to complete the design and implementation in a very short time, taking into account the selection of materials that are resistant to high humidity, as the restaurant is on the sea. And we had to make a design that can be easily moved and installed inside the site from Muscat to Salalah.



ABT TECHNOLOGIES, 1700sqm

 Azuaiba, Muscat, Oman.





Design consideration

One of the ways we can use technology in our design is by implementing specific lines and shapes. By doing this, we can create a more user-friendly experience for our visitors. Additionally, by using specific lines and shapes, we can create a more uniform look and feel for our site.



Our design concept

The client wanted offices that were spacious and brightly lit, with plenty of natural light. This would help to increase productivity and avoid the dreary, soulless atmosphere often found in traditional offices. White walls and low ceilings were chosen as the perfect combination of clean and modern. Considering ABT company is the main of Samsung huawie and oppo in Oman.

THE LOUNGE RESTAURANT, 600sqm



Auzaiba, Muscat, Oman.



Our design concept

Our team was commissioned to redesign the current shisha lounge with a more luxurious and classic style. The client wanted something that would reflect the high quality of their establishment and stand out from the rest. We took inspiration from French and Art Deco design, creating a space that is elegant and sophisticated. Whether you're looking for a place to relax after a long day or to socialize with friends, the shisha lounge is the perfect spot.



GULF OIL SERVICE OFFICE, 600sqm

 AlNawras Complex, Al Khuwair, Muscat



Our design concept

This design is for an oil company office that focuses on mining oil and finding new sources of material. We used wood and natural wood to give the office a natural, earthy look. We also used soft colors to create a welcoming and comfortable atmosphere. Lighting in oil company offices is important, and natural light gives businesses a sense of prestige. The colors used in this design, including Paige and bright brown, are from natural resources, which makes them more natural and prestigious.



Comfortable seats

Based on our client's previous comments, it seems that they spend a lot of time sitting in one place, either at work or during meetings. This can make them really uncomfortable over a long period of time.



COPY RIGHT 2022 ALL RIGHTS RESERVED XIT INTERIOR DESIGN / FITOUT



COPY RIGHT 2022 ALL RIGHTS RESERVED XIT INTERIOR DESIGN / FITOUT



COPY RIGHT 2022 ALL RIGHTS RESERVED XIT INTERIOR DESIGN / FITOUT

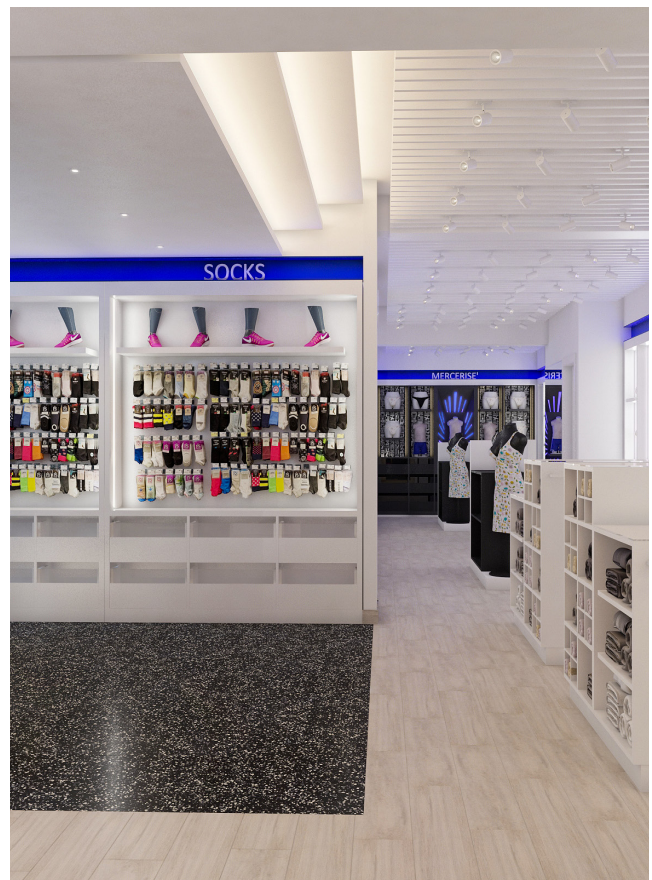
The importance of natural light in offices cannot be overstated. It helps to increase productivity, refresh the office environment, and provide a more comfortable working environment. Health and Productivity Benefits of Natural Light in Office Spaces. Numerous studies have shown that natural light in office spaces improves worker satisfaction and productivity

COTTONIL STORE, 170sqm

📍 Al Khoudh, Muscat, Oman.

Our design concept

We drew inspiration for our new flooring from the lines and contours on the ancient Egyptian pyramids, as well as the use of modern materials that make our flooring look different from other brands. We believe that our flexible stone flooring will be more interesting and engaging for customers, and will create a more unique experience. We used hieroglyphic lettering to give the impression of authenticity and greatness





Challenges

The store's design has to be easy to see and understand, since the focus is on the products themselves. This can be difficult to maintain, but it's worth it if it helps attract customers. This can be difficult to do, but it's important to keep the focus on the products if we want to keep the store's look simple.

COTTONIL STORE, 45sqm

Challenges

The shop's width is very small, making it difficult to do the fitout work such as the MEP and fire safety. The HVAC system was also difficult to fix and implement according to the mall guidelines and standards. But we were able to meet all deadlines and exceed the standard of the mall and our client.

 Oman Mall, Ghoubrah, Oman.



Our design concept

This is the Main branch for cottonil in Mall of Oman. We came up with new ideas for the Oman franchise, which are different from the original concept. Our inspiration for this franchise came from the lines and contours in Egypt's pyramids, as well as the use of modern materials that reflect a different

image for the brand. We believe that our flexible stone flooring and black terrazzo floors will engage more with customers and create a more unique experience. We used hieroglyphic lettering to give the impression of authenticity and greatness to show the strength and longevity of this brand and its products. Studying the location is an important part of any interior design project, as it can help you to design a space that harmonizes with the surrounding environment. Location can be a key factor in the design of a space, as it can affect the natural light, views, and sound that come into the room. Knowing the layout of the area, as well as the features and characteristics of the surrounding environment, can help you to create a space that is comfortable and functional.



ECCESSWARY STORE, 200sqm

📍 AlHafa Market, Salalah, Oman.



Our design concept

This is the flagship store for eccesswary. The Concept is inspired by the nature of the products the brand promotes and the image they try to reflect. Their products combine quality and affordability, which makes them a popular choice for customers. Recently, the client wanted to elevate the look of the previous stores with new creative ideas that would help make a greater customer experience. By doing this, they were able to achieve a fresh look with low budget constraints.



Our customer's word

We were happy to work with XIT company, the guys were very polite and creative. We've worked with them on multiple occasions and they always provide high-quality work. We would definitely recommend them to others and look forward to working with them in the future. Thanks. XIT!

TAMKEEN OFFICES, 130sqm

📍 Al Khuwair, Muscat, Oman.

Our design concept

Tamkeen offices are a stunning design that feature various grids in different parts of the office. You can see the grids in the walls using the wood patterns in different colors, or in the meeting rooms, which have walls with wood patterns in different colors, with a gloss of black attached to the counters. The design





Dark Wood & Elegant

Dark wood can add a touch of luxury and drama to any room. Many different species of wood are often celebrated for their opulence and ability to create a classical sense of luxury and mystique. A room that makes extensive use of dark wood and intricate carved furniture and traditional décor can have a sense of luxury and mystique that is classical.

takes some time to fit out, as adding various materials to specific objects and making it look seamless and professional is important in our work. The high focus of natural lighting in the office, along with touches of greenery, is important to add a joyful, relaxing atmosphere. The high ceiling in the meeting room helped to create an atmosphere of relaxation, which was helpful in carrying out clear meetings.

X!t

Interior Design | Fitout





Interior Design | Fitout

OUR CLIENTS





Interior Design | Fitout

OUR SUPPLIERS



invalights

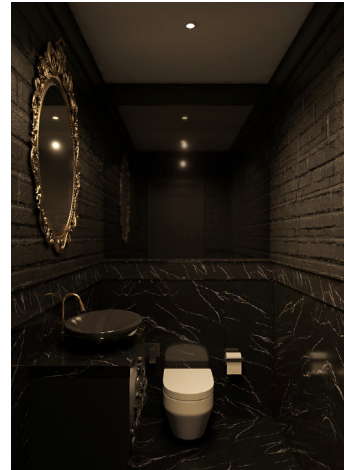


OmanCables
الكابلات العمانية





it's
YOUR IMAGE
TO REALITY



Founders of Xit Interior Design | Fitout, Mohammad Al Refai, Morad Awinat.

Dear our wonderful client, we're here to serve you and provide the best quality services possible. We're committed to using our professional experience and our creative minds to create beautiful projects that reflect your unique style. We believe in delivering on our promises, so we hope you'll continue to rely on us. With Xit, we bring your own image, to reality!

Morad Awinat
Al Refai



CONTACT INFO



Airport Shell Station, 1st Floor.
Azaiba, Muscat, Oman. 13



+968 71113368



+968 97132695



info@xit.om



www.xit.om



info@xit.om



www.xit.om



Xit.oman



YOUR IMAGE
TO REALITY